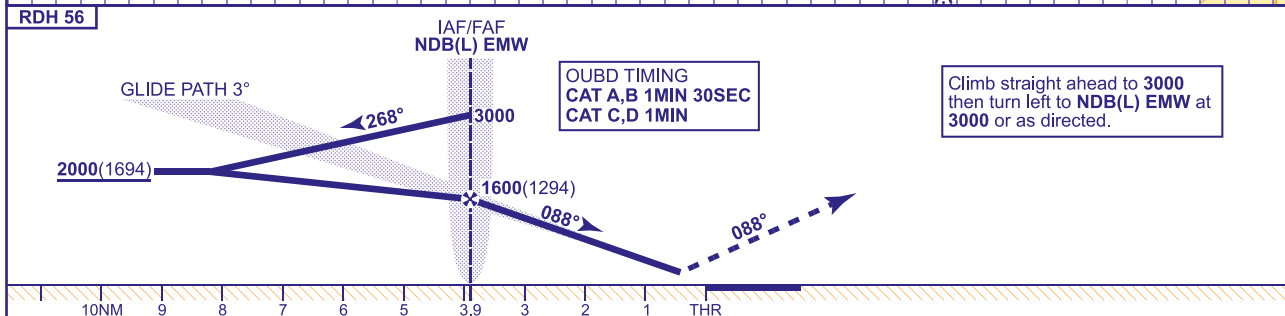
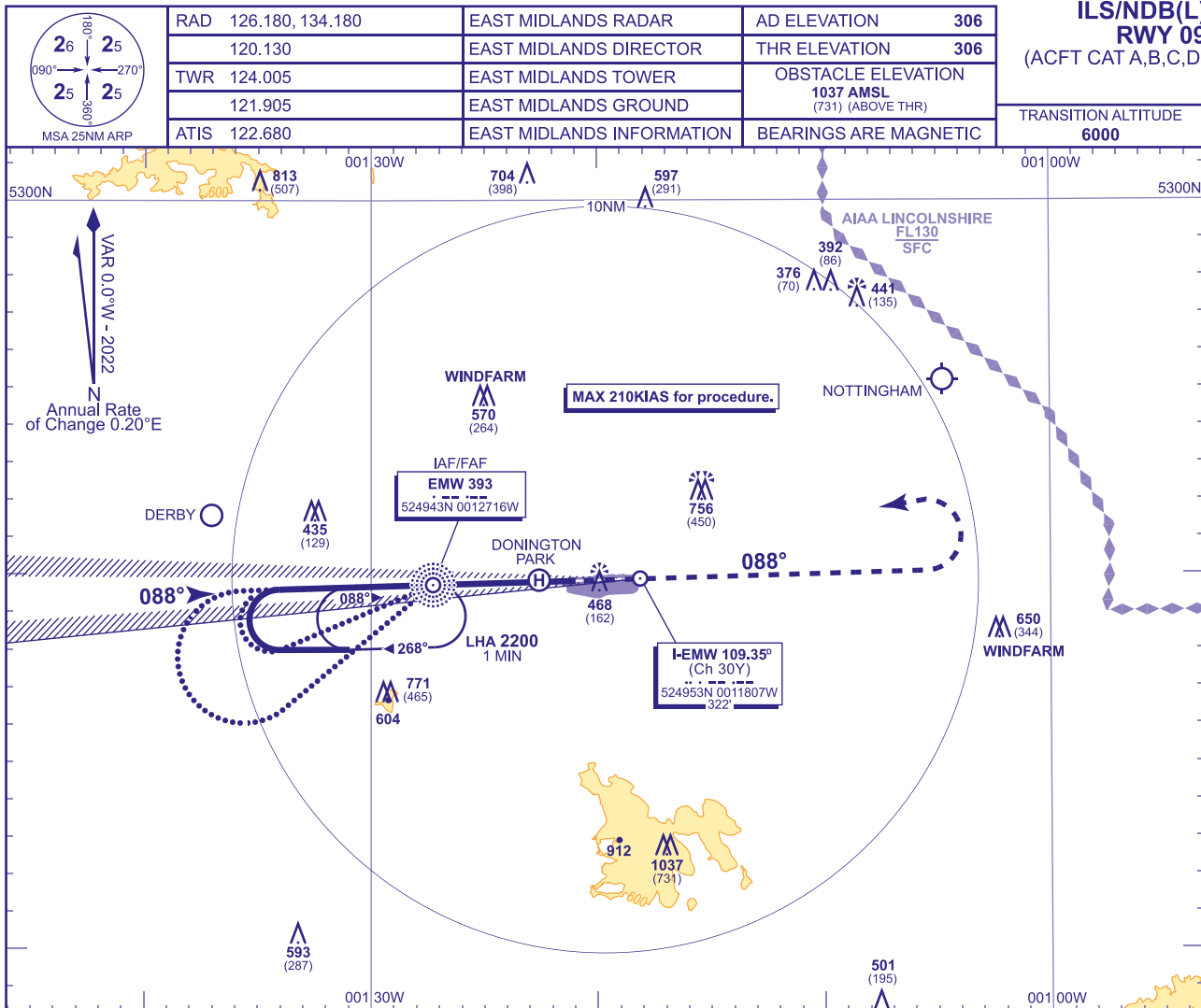


INSTRUMENT APPROACH CHART - ICAO

EAST MIDLANDS
ILS/NDB(L)
RWY 09
(ACFT CAT A,B,C,D)



Aircraft Category		A	B	C	D	Rate of descent	G/S KT	160	140	120	100	80
OCA (OCH)	CAT I	462(156)	472(166)	484(178)	498(192)		FT/MIN	850	740	640	530	420
VM(C)OCA (OCH AAL)	Total Area	770(464)	800(494)	1160(854)	1160(854)							

ALTERNATIVE PROCEDURE

Notify ATC. Fly outbound leg of baseturn on NDB(L) EMW QDR 248° for 1MIN 45SEC (cat A,B), NDB(L) EMW QDR 231° for 1MIN 15SEC (CAT C,D) descending to not below **2000**(1694), then turn right to establish on the LOC. MAX 210KIAS.

NOTE 1 Aircraft unable to receive DME I-EMW notify ATC.
2 Lowest altitude to commence procedure from hold is **3000**.
3 Aircraft will normally be required to hold not lower than **3000**.

CHANGE (3/25): NEW CHART.